

Pronamic catalogue

A WORLD OF RAIN AND PRECIPITATION SENSORS



Small

Tower

Professional

Met. Rain

Met.
Rain/snow

Small Rain Gauge with PCB 9602 – item no. 100.054



Configuration

Rain collector, orifice 5 x 10 cm = 50 cm²
 PCB No. 9602 has a terminal strip and two reed switches. The reed switches are NO – normally open and NC - normally closed.
 Resolution: 1 mm rain pr. Tip
 Calibration: 5 grams pr. Tip.
 Accuracy: +/- 5%
 For cable, please see page 15

PCB 9602



Small Rain Gauge with PCB 9601– item no. 100.053



Configuration

Rain collector, orifice 5 x 10 cm = 50 cm²
 PCB No. 9601 has a male connection and one reed switch. The reed switch is NC – Normally Closed.
 Resolution: 1 mm rain pr. Tip
 Calibration: 5 grams pr. Tip.
 Accuracy: +/- 5%
 For cable, please see page 15

PCB 9601



Tower Rain Gauge with PCB 9602– item no. 100.074



Configuration

Rain collector, orifice = 50 cm²
 PCB No. 9602 has a terminal strip and two reed switches. The reed switches are NO – normally open and NC - normally closed.
 Resolution: 1 mm rain pr. Tip
 Calibration: 5 grams pr. Tip.
 Accuracy: +/- 5%
 For cable, please see page 15

PCB 9602



Tower Rain Gauge with PCB 9601 – item no. 100.073



Configuration

Rain collector, orifice = 50 cm²
 PCB No. 9601 has a male connection and one reed switch. The reed switch is NC – Normally Closed.
 Resolution: 1 mm rain pr. Tip
 Calibration: 5 grams pr. Tip.
 Accuracy: +/- 5%
 For cable, please see page 15

PCB 9601



Professional Rain Gauge with PCB 9602 – item no. 300.023



Configuration

Professional rain collector, orifice 200 cm²
 PCB No. 9602 has a terminal strip and two reed switches. The reed switches are NO – normally open and NC - normally closed.
 Resolution: 0.1 – 0.2 – 0.25 or 0.50 mm rain pr. Tip
 Accuracy: +/- 2%
 Inclusive of mounting angel brackets 500.310
 Instruction manual included
 For cable, please see page 15

PCB 9602



Professional Rain Gauge with PCB 9601 – item no. 300.021



Configuration

Professional rain collector, orifice 200 cm²
 PCB No. 9601 has a male connection and one reed switch. The reed switch is NC – Normally Closed.
 Resolution: 0.1 – 0.2 – 0.25 or 0.50 mm rain pr. Tip
 Accuracy: +/- 2%
 Inclusive of mounting angel brackets 500.310
 Instruction manual included
 For cable, please see page 15

PCB 9601



Professional Rain Gauge Green Colour with PCB 9602 item no. 300.023 GC



Configuration

Professional rain collector, orifice 200 cm²
 PCB No. 9602 has a terminal strip and two reed switches. The reed switches are NO – normally open and NC - normally closed.
 Resolution: 0.1 – 0.2 – 0.25 or 0.50 mm rain pr. Tip
 Accuracy: +/- 2%
 Inclusive of mounting angel brackets 500.310
 Instruction manual included
 For cable, please see page 15

PCB 9602



Professional Rain Gauge Green Colour with PCB 9601 item no. 300.021 GC



Configuration

Professional rain collector, orifice 200 cm²
 PCB No. 9601 has a male connection and one reed switch. The reed switch is NC – Normally Closed.
 Resolution: 0.1 – 0.2 – 0.25 or 0.50 mm rain pr. Tip
 Accuracy: +/- 2%
 Inclusive of mounting angel brackets 500.310
 Instruction manual included
 For cable, please see page 15

PCB 9601



Meteorological Rain Gauge (WMO compliant) – item no. 200.002



Configuration

Meteorological rain collector, orifice 200 cm²
 PCB No. 9602 has a terminal strip and two reed switches. The reed switches are NO – normally open and NC - normally closed.
 Resolution: 0.1 – 0.2 – 0.25 or 0.50 mm rain pr. Tip
 Accuracy: +/- 2%
 Top ring with 60 degrees angle
 Bottom made of aluminum
 Instruction manual included
 For cable, please see page 15

PCB 9602



Meteorological Rain- and Snow Gauge (heated rain gauge) – item no. 400.042



Configuration

Meteorological rain and snow collector, orifice 200 cm²
 PCB No. 9602 has a terminal strip and two reed switches. The reed switches are NO – normally open and NC - normally closed.
 Resolution: 0.1 – 0.2 – 0.25 or 0.50 mm rain pr. Tip
 Accuracy: +/- 2%
 Top ring with 60 degrees angle
 Bottom made of aluminum
 Built in heating element
 Instruction manual included
 Power supply included
 For cable, please see page 15

PCB 9602



ACCESSORIES

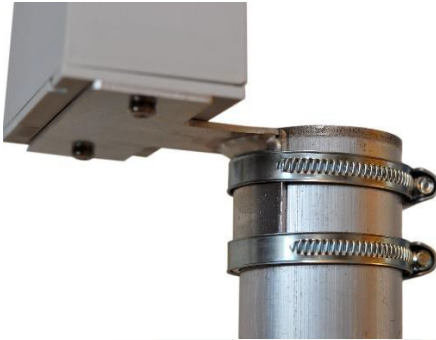
Universal Pole bracket for Professional - item no. 500.312

Fits Professional 300.021 and 300.023



Universal Pole bracket for Small – Item 500.315.

Fits Small 100.053 and 100.054



Universal Pole bracket for Tower – Item 500.311.

Fits Tower 100.073 and 100.074



Leaf grid/Bird spikes– item 500.320

For Professional 300.021 and 300.023. Leaf grid mounted on bird protection spikes.

1 set consist of 1 leaf grid in stainless steel and 6 bird spikes in stainless spring steel.



Bird spikes for Professional and Meteorological – Item 500.319

For Professional 300.021 & 300.023 and for Meteorological 200.002 1 set consist of 6 spikes in stainless spring steel.



Bubble-level on Professional – Item no. 500.313

For easier installation of sensor. Mounted outside the sensor. Fits Professional 300.021 and 300.023



Standard Cable connection – item 500.333

Binder 7-pin plug and cable up to 2 meters mounted on the sensor. Fits Professional 300.021 and 300.023

It is also possible to get a custom cable onto all our sensors. Please contact us for more info.



Calibration certificate – Item no. 500.314

Pronamic standard certificate for calibration of each sensor with matching serial no.



CUSTOMIZATION

Customers own colour for Professional - Item no. 500.318

Customers own selection of color on Professional

Blanket order on min. 400 pcs. for successive delivery required. Materials in dyed ASA



Customer logo on the sensor – Item no. 500.316

Get your own customized logo onto the funnel as shown here.
Weather resistant self-adhesive labels on the Funnel.

Min. order on 100 pcs. Required.

